

North Dakota Native Vote

Redistricting Education Fact Sheet



PROTECT YOUR COMMUNITY. GET INVOLVED IN THE REDISTRICTING PROCESS.

WHAT IS REDISTRICTING?

Redistricting is used by governments to redraw political boundaries every 10 years after the decennial Census is complete. The process of redistricting is:

- Based on census data to draw new legislative maps that account for population changes across communities.
- Based on the idea of "one person, one vote".
- Used to ensure that each person can be represented fairly by creating boundaries that have the same number of people.



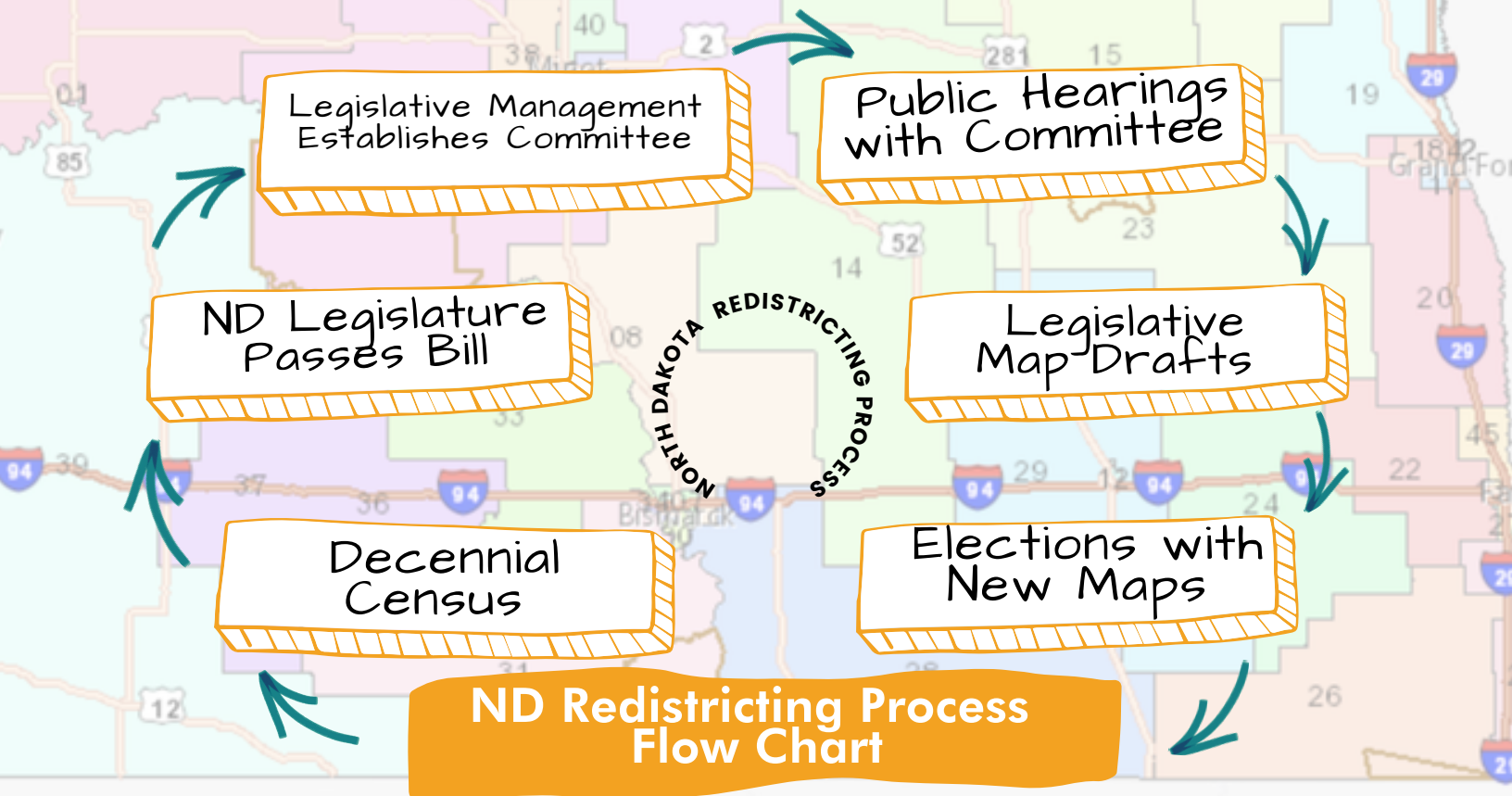
"Protectors" artwork by Avis Charley

The North Dakota State Legislature is responsible for drawing state legislative district boundaries. We need you to get engaged because:

- This is a critical opportunity for communities to build power, ensure equal political representation, and address systemic inequities for the next decade.
- You are the expert on your community and we need your help to make the mapping process fair!
- You have the expertise to help define your community, access public data to draw maps, identify racial communities, geographical borders, cultural similarities, partisan or other gerrymanders, and evaluate the fairness and accountability of proposed redistricting plans.

WHO DRAWS THE MAPS?

#SHAPENATIVEFUTURES



1. Why is the Decennial Census important?

- Population numbers are the key to redistricting.
- These numbers are released to each state to begin the process of redistricting.

2. How does the redistricting process start?

- Legislators propose a bill to begin the process.
- The legislative body votes to pass the bill to start.

3. Who oversees the process?

- North Dakota uses a legislative redistricting committee
- A committee chair is appointed to select the committee members.

4. How does the public stay informed?

- The ND Redistricting Committee hosts public hearings.
- Hearings are for citizens to address their concerns or support.

5. Why is it important we see the legislative map drafts?

- The maps directly advocates and educates decision makers about your community.
- They must comply with the Voting Rights Act.
- The maps can be challenged in court if they are unsatisfactory.

6. What happens when the new maps are completed?

- Will be used for elections over the next ten years.
- The long-lasting effects of redistricting is an important reason for people to be involved.



For more information about Redistricting contact:

North Dakota Native Vote
(P) 888-425-1483

(E) info@ndnativevote.org

(W) <http://ndnativevote.org/>

FIND US ON SOCIAL MEDIA



@NDNV_official



@NDNV_official



@NorthDakotaNativeVote